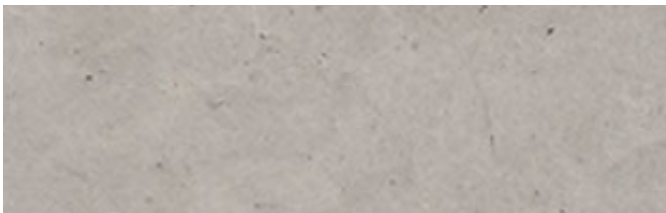




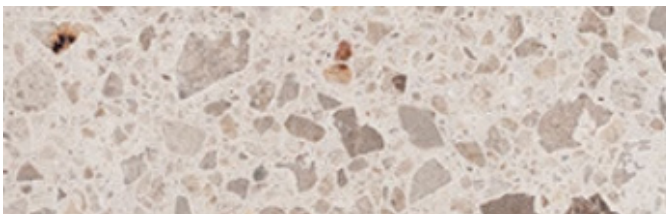
## PRECAST CONCRETE - STANDARD FINISHES

Precast concrete products are durable, versatile, and low-maintenance construction elements suitable for a wide range of architectural and structural applications. Manufactured under controlled conditions, they offer consistent quality, strength, and finish.



### DRESSED FINISH

A dressed finish is the standard finish available on all concrete products and is achieved by hand rubbing the surface to create a smooth, flat, matt appearance that provides a consistent and understated aesthetic suitable for a wide range of applications.



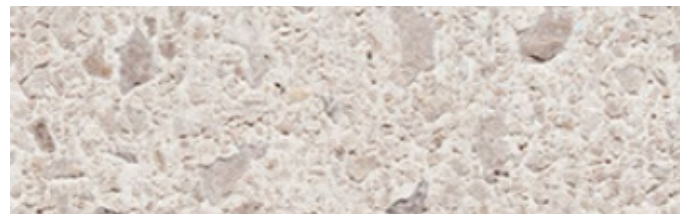
### POLISHED FINISH

A polished finish is created by processing the top surface of the unit to achieve a smooth, refined appearance while exposing the aggregate beneath, enhancing visual appeal through natural colour variation and making it suitable for decorative and architectural applications, with side faces supplied in a dressed finish.



### LIGHT ACID ETCH FINISH

An acid etch finish is achieved by washing the concrete surface with controlled concentrations of acidic solution to create varying textures, ranging from a light etch resembling ashlar sandstone or limestone to a heavier etch that produces a more pronounced picked or stippled surface.



### EXPOSED AGGREGATE FINISH

An exposed aggregate finish uses specialist techniques to reveal the aggregate within the concrete, creating a textured and visually striking surface that enhances slip resistance while offering a wide range of colour and texture variations suitable for decorative and anti-vandal applications.



We also offer a range of concrete colours available on request to suit specific project requirements.

**For further details, please speak to our team.**

**Call 01625 322 888 or Email - [hello@bsfg.co.uk](mailto:hello@bsfg.co.uk)**



## **PRECAST CONCRETE - MAINTENANCE & CARE**

---

Precast concrete products require minimal maintenance; however, regular inspection and cleaning are recommended to maintain appearance and performance.

### **GENERAL MAINTENANCE**

Precast concrete products require minimal maintenance; however, regular inspection and cleaning are recommended to maintain both appearance and performance. Periodic inspections should be carried out to identify any signs of wear or damage, and surfaces should be cleaned regularly to prevent the build-up of dirt and contaminants. Where damage occurs, particularly in chipped areas, surfaces should be resealed as required to maintain durability.

For cleaning, a mild detergent combined with warm water and a soft bristle brush should be used. Care should be taken to avoid aggressive scrubbing, especially on polished finishes, as this may damage the surface. After cleaning, the product should be thoroughly rinsed with clean water. Surrounding areas should be pre-wetted prior to cleaning to prevent staining from runoff.

Under no circumstances should acids or strong chemical cleaners be used, as these can damage the concrete surface and reduce its durability.

### **DURABILITY & HANDLING CONSIDERATIONS**

Concrete is a porous material and may be susceptible to staining, even when sealed. Contact with paint, oil-based substances, acids, salts, and other staining agents should be avoided wherever possible. Over time, edges and corners may chip or wear through regular use; if this occurs, damaged areas should be resealed promptly to prevent further deterioration.

### **ENVIRONMENTAL & USAGE WARNINGS**

The use of salts and chemical de-icers should be avoided, as these can cause surface damage and lead to spalling. Additionally, all concrete products will naturally weather over time, which may result in changes to their appearance.